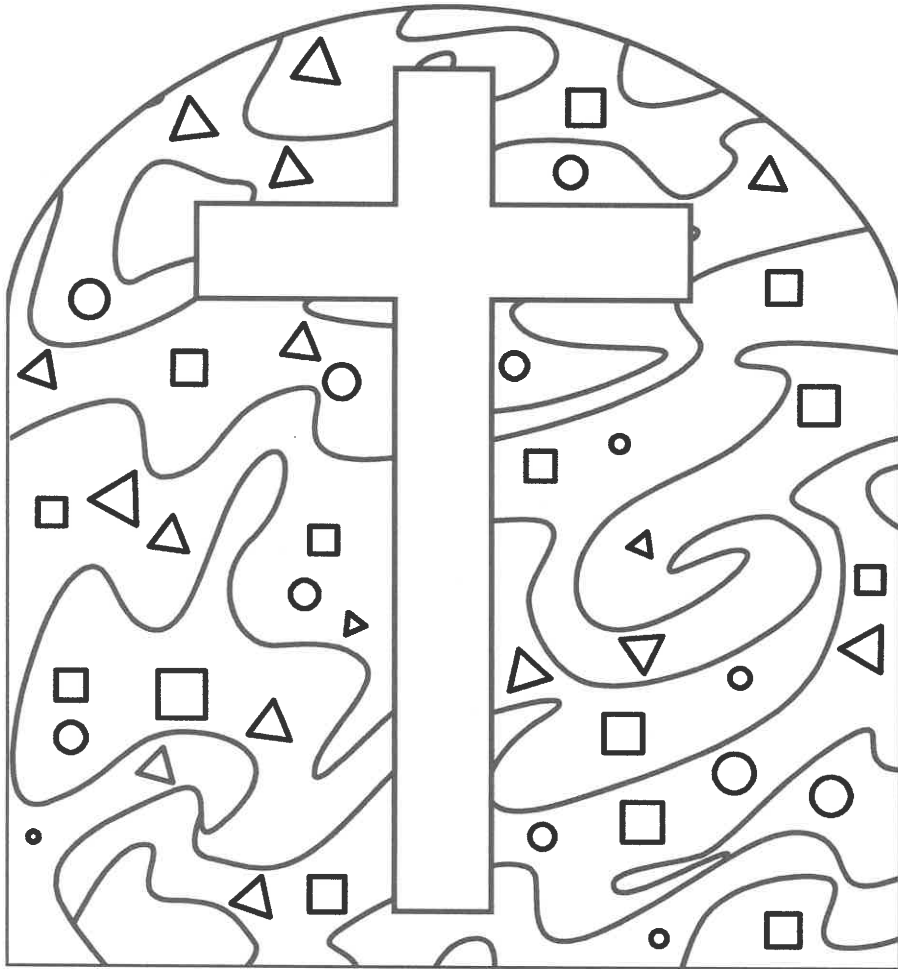


Color in the stained glass window.



triangle = purple  
square = blue  
circle = green

Does your church have stained glass windows? Ours does!



Fold here  
 Whirl Year Gold Winter Director Guide, wearsparkhouse.org, © 2016 sparkhouse. All rights reserved.  
 May be reproduced for local use only, provided each copy carries this notice.

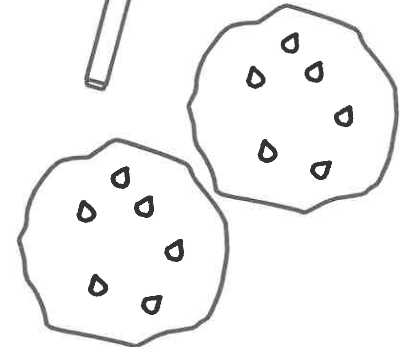
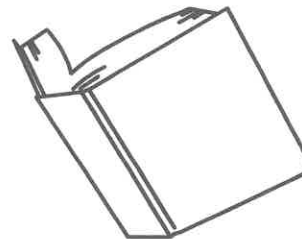
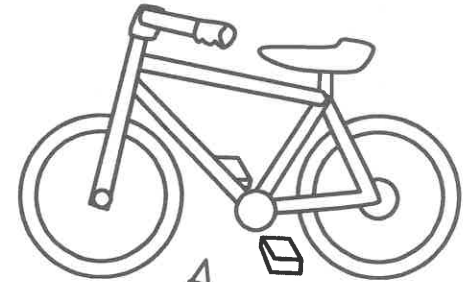
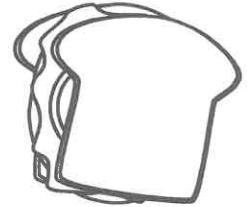
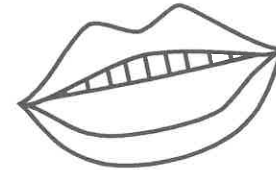
# The Widow's Offering

## TODAY'S THEME IS APPEARANCES.



### Why do we share with others?

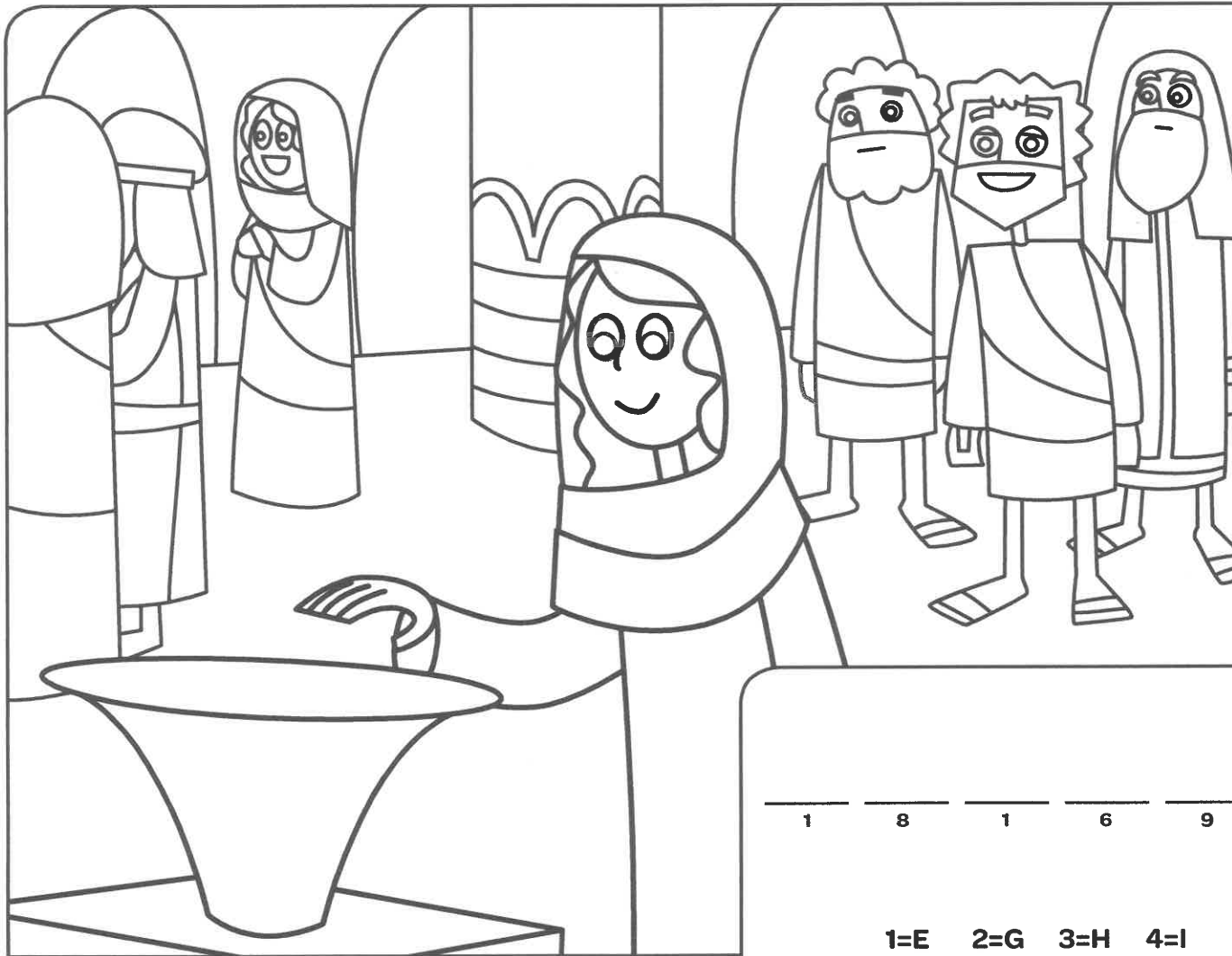
Jesus was watching for people to share nicely. Circle the things you can share with others.



Fold here

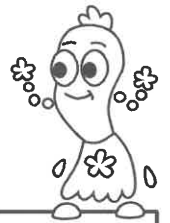
# The widow gave all her money—two coins!

See Jesus smiling? He was happy with what the widow gave. Put the letters in order to see how much we all should give.



Wow, that takes trust!

I might worry about giving it all away.



1    8    1    6    9    7    3    4    5    2

1=E    2=G    3=H    4=I    5=N    6=R    7=T    8=V    9=Y

Today our church family prays for...